

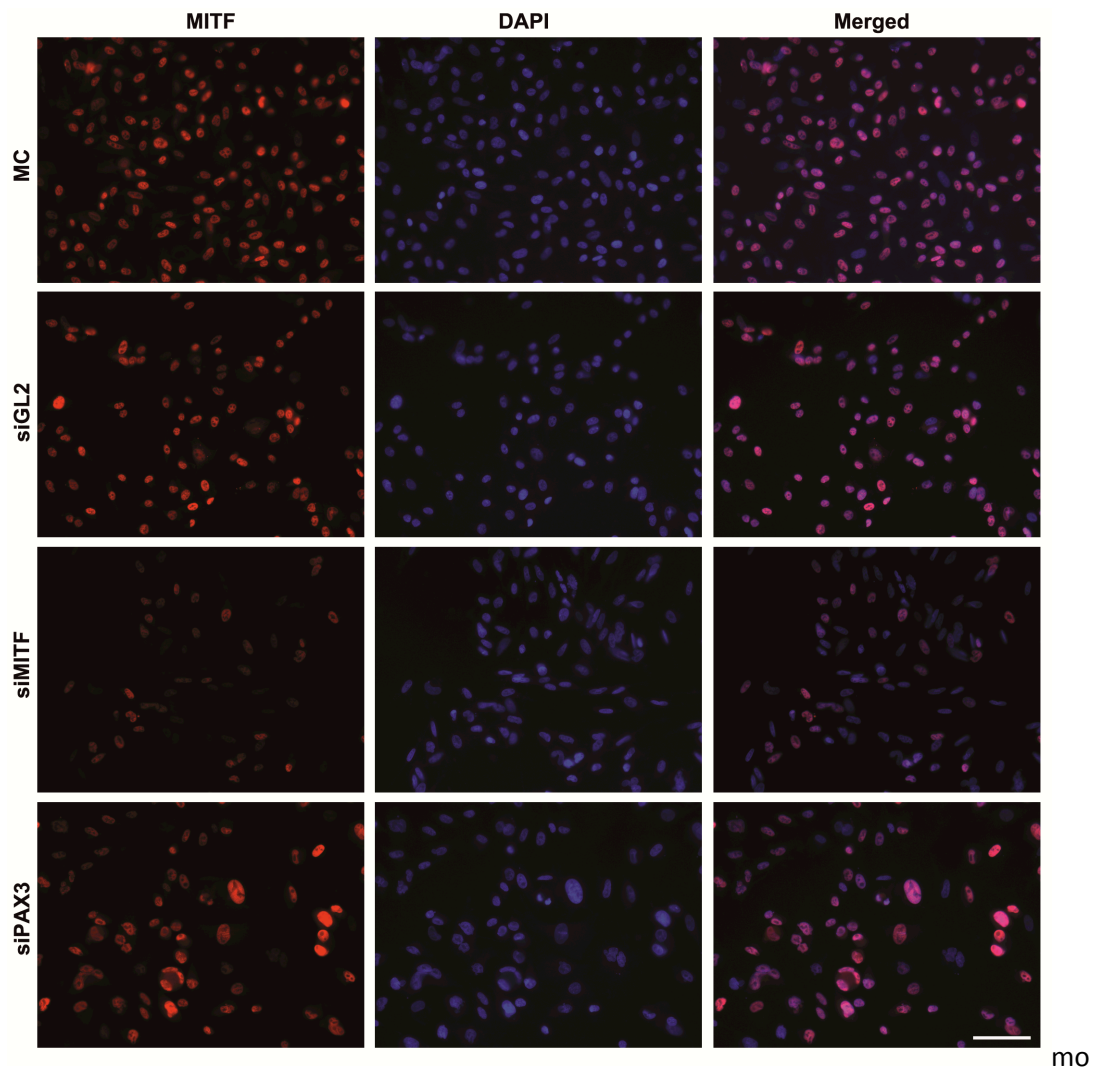
PAX3 knockdown in metastatic melanoma cell lines does not reduce MITF expression**Supplementary Figures**

Fig. S1 Reduced expression of MITF after treatment of *MITF* siRNA but not of *PAX3* siRNA in NZM15 cells by day 9 by immunofluorescent cellular staining. MC: media control, siGL2: luciferase siRNA, siMITF: MITF siRNA, siPAX3: PAX3 siRNA. Scale bar: 50µM.

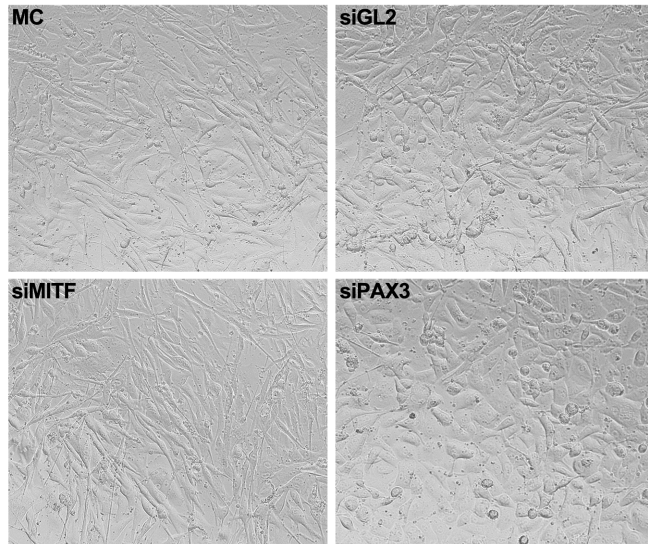


Fig. S2 Morphology changes of NZM15 cells after 4 days of treatment with *MITF* siRNA or *PAX3* siRNA.